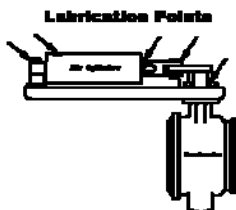
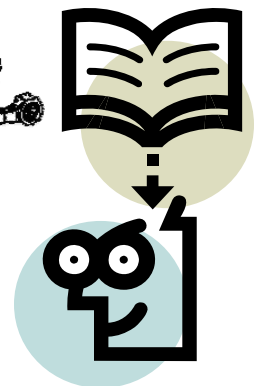
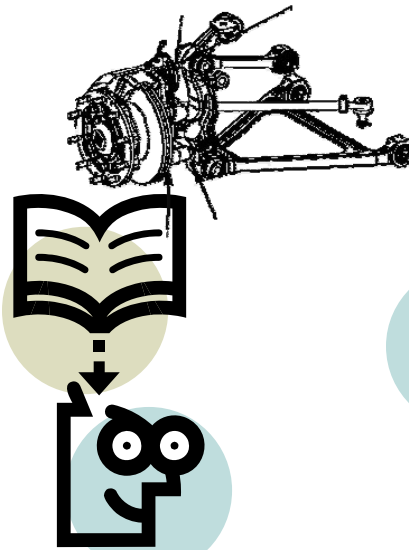
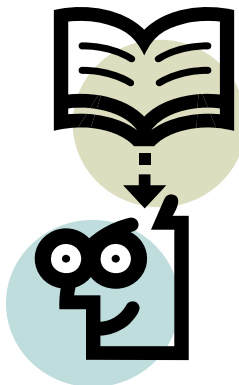
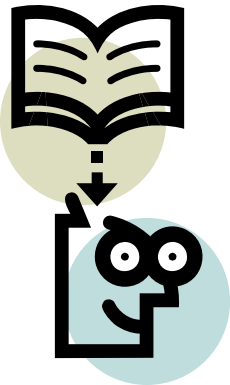
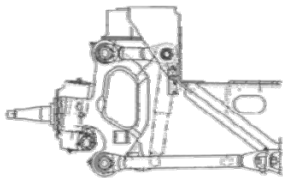
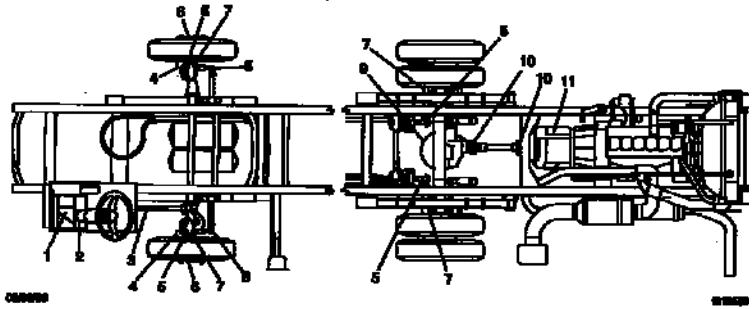


Maintenance Information

2007 Till Present Year

Some Customers have several concerns over Maintenance. When this chapter is done you should have a better understanding of what is needed to be done to your coach, from 1995 - till present.

1. Who to call for help
2. Where to look in your manual
3. Where to look on the internet





Driven By You

Please remember if you need any help on information or what to do or where to go you can call 1-800-FTL HELP (1-800-385-4357). In the past this number was a 24hour and 7 days a week including Holidays Help line. During 8 am till 6 pm East Coast Time Monday – Friday, you would speak to someone in Gaffney SC at the Factory Call Center. Then it would go to after hours Freightliner in Portland Oregon for Help.

There has been some changes for you the Customer, all calls will be handled by the Freightliner Custom Chassis Call Center here in South Carolina. YOU STILL CALL 1-800-385-4357.

Now let's look at some of the changes that have taken the place.

1. No longer is all the maintenance at 6 month intervals
2. Services have been changed to 12 month or 15,000 mile which ever comes first

What happened to my M1, M2, M3 Services????? They have now been changed to Yearly Services. Wait don't I have a yearly service program already>>><<< (ENGINE ONLY)

Pre 2007 vehicles had:

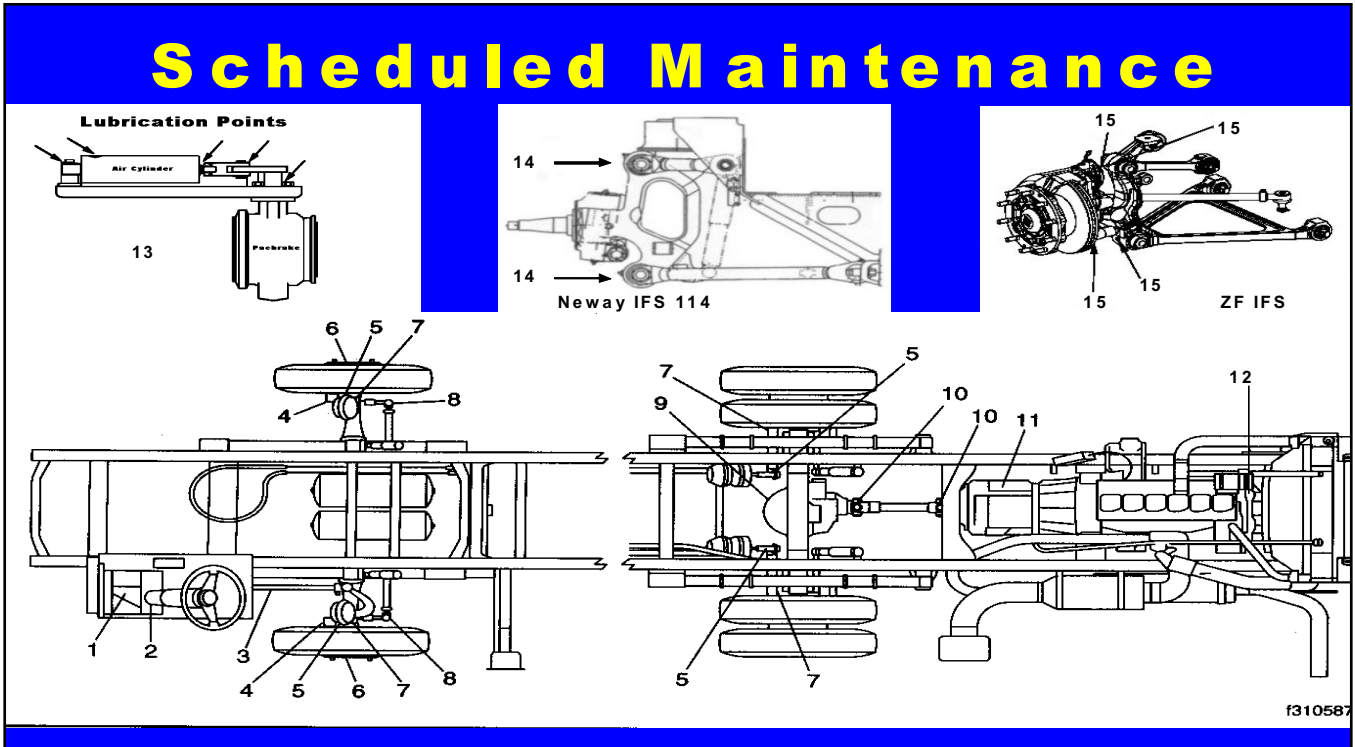
1. IM 6 months or 6,000 miles 9,000 KM which ever came first
2. M1 every 6 months or 6,000 mile 9,000 KM which ever came first
3. M2 every 12 months or 12,000 mile 24,000 KM which ever came first
4. M3 every 24 months or 24,000 mile 30,000 KM which every came first

You Now Have:

- A. 6 month or 6000 mile 9000 KM for the initial Service
- B. 12 month or 15,000 mile 24,000 KM which ever comes first
- C. 24 month or 30,000 mile 48,000 KM which ever comes first
- D. 36 month or 45,000 mile 72,000 KM which ever comes first

OK, So what does that mean to me? You now have a yearly Service Program for the Chassis and the Engine on the Same Scheduling, this will make Servicing your coach easier on You the customer.

If you brought your Owners and Operators guide please turn to the white pages and go to the Maintenance and Service Interval Page or DOT matrix page. If you did not, go to next page for an example of old service menu:



One very important area of regular, scheduled maintenance, is the lubrication of various points on the chassis steering, braking and suspension systems. The above chart points out these locations. The lubrication intervals and lubricant specifications are listed in your owners manual and on the attached pages for your particular chassis. Lubrication does not have to be performed by a authorized service dealer, but the dates and mileage of lubrication and general service should be recorded for future reference.

No.	Text Ref. No.	Components	Remarks	Total
1	46-05	Steering Gear	One Grease Fitting	1
2	46-04	Steering Shaft	Three grease fittings; lubricate both universal joints and the slip joint spline	3
3	46-01	Drag Link & Bell Crank	Two grease fittings per drag link; one on each end, and one on bell crank housing	5
4	33-01	Knuckle Pins	Two grease fittings; one on top and one on bottom of knuckle pin. Lubricate both sides of axle.	4
5	42-05	Automatic Slack Adjusters	One Grease Fitting; Lubricate boths sides of front and rear axle	4
6	33-04	Grease Lubricated Wheel Bearings, Front Axle	Inspect, repack and adjust inner and outer bearings on both sides of front axle	
7	42-04	Brake Camshaft Bracket	One grease fitting; Pump in grease until it appears at the slack adjuster end of the bracket. Lubricate both sides of the front and rear axles.	4
8	33-02	Tie Rod	One grease fitting; one on each end of tie rod	2
9	35-01	Rear Axle	Check fluid level; add fluid if low (35-02)	
	35-02		Change fluid when required (35-01)	
10	41-01	Driveshaft	Three grease fittings; lubricate both universal joints & slip joint spline	3
11	26-02	Automatic Transmission	Change fluid when required (35-01)	
12		Caterpillar Fan Drive Pulley	One grease fitting; on top of fan drive pulley on Engines built prior to 1/03/03	1
		Note: 3126E Serial # HEP15357 & above, and all C7's, and all side radiator NO Grease fitting.		
13		Pacbrake Exhaust brake	Lubricate the five points indicated	
14	32-04	Neway Ind. Front Susp.	Two grease fittings; One on top & bottom of knuckle post, lubricate both side of suspension	4
15		ZF Ind. Front Susp.	Four grease fittings;one on top and bottom steering knuckle, and one on top and bottom control arm. Lubricate both sides of suspension.	8



Driven By You

Vehicle Maintenance Schedule Table: 00–02

Maintenance Operation Procedures and Schedule																				
Maintenance Operation Number and Description	Maintenance Interval in Miles x 1000																			
	6	15	30	45	60	75	90	105	120	135	150	165	180	195	210	225	240	255	270	285
	Maintenance Interval in Kilometers x 1000																			
	9	24	48	72	96	120	145	169	193	217	241	265	290	314	338	362	386	410	434	458
	Maintenance Interval in Months																			
6	12	24	36	48	60	72	84	96	108	120	132	144	156	168	180	192	204	216	228	
01–01 Engine Drive Belt Inspecting	•	•	•	•	•	•	•	•	•	•	•	•	•	•	•	•	•	•	•	•
01–02 Engine-Support Fasteners Checking	•	•	•	•	•	•	•	•	•	•	•	•	•	•	•	•	•	•	•	•
09–01 Air Cleaner Inspection and Replacement	When first purchased, if the Recreational Vehicle is older than the current model year, replace the air filter. Inspect the air cleaner every 12 months. Replace the air filter every 24 months, or when filter restriction reaches 25 inH ₂ O (if equipped with an air restriction gauge).																			
09–02 Charge Air Cooler (CAC) Inspection and Cleaning	•	•	•	•	•	•	•	•	•	•	•	•	•	•	•	•	•	•	•	•
13–01 Air Compressor Inspection	•	•	•	•	•	•	•	•	•	•	•	•	•	•	•	•	•	•	•	•
15–01 Alternator, Battery, and Starter Connections Check	•	•	•	•	•	•	•	•	•	•	•	•	•	•	•	•	•	•	•	•
20–01 Radiator Cap Check	•	•	•	•	•	•	•	•	•	•	•	•	•	•	•	•	•	•	•	•
20–02 Radiator Inspection and Cleaning	•	•	•	•	•	•	•	•	•	•	•	•	•	•	•	•	•	•	•	•
20–03 Coolant Replacement	The coolant replacement interval is every 100,000 miles (160 900 km) or 60 months, whichever comes first. You must check and, if necessary, recharge the supplemental coolant additive (SCA) levels and freeze point every 25,000 miles (40 225 km) or 6 months, whichever comes first. See the applicable engine operation and maintenance manual for further information.																			
20–04 Mechanical Fan Drive Gearbox Oil Change	•	•	•	•	•	•	•	•	•	•	•	•	•	•	•	•	•	•	•	•
20–05 Mechanical Fan Drive Gearbox Lubrication	•	•	•	•	•	•	•	•	•	•	•	•	•	•	•	•	•	•	•	•
26–01 Transmission Breather Checking	•	•	•	•	•	•	•	•	•	•	•	•	•	•	•	•	•	•	•	•
26–02 Allison MD/MH Series Transmission Fluid Level Checking	•	•	•	•	•	•	•	•	•	•	•	•	•	•	•	•	•	•	•	•
26–03 Allison Transmission Fluid and Filter Changing (internal/external filter)	For oil and filter change intervals, see the applicable Allison Operator's Manual.																			
30–01 Throttle Pedal Pivot Pin Lubricating	•	•	•	•	•	•	•	•	•	•	•	•	•	•	•	•	•	•	•	•
32–01 Suspension Fastener Torque Check	•	•	•	•	•	•	•	•	•	•	•	•	•	•	•	•	•	•	•	•
32–02 Suspension Height Control Valve Check	•	•	•	•	•	•	•	•	•	•	•	•	•	•	•	•	•	•	•	•

Vehicle Maintenance Schedule Table: 00-02

Maintenance Operation Procedures and Schedule																				
Maintenance Operation Number and Description	Maintenance Interval in Miles x 1000																			
	6	15	30	45	60	75	90	105	120	135	150	165	180	195	210	225	240	255	270	285
	Maintenance Interval in Kilometers x 1000																			
	9	24	48	72	96	120	145	169	193	217	241	265	290	314	338	362	386	410	434	458
	Maintenance Interval in Months																			
6	12	24	36	48	60	72	84	96	108	120	132	144	156	168	180	192	204	216	228	
32-03 Neway Suspension Inspection
32-04 ZF IFS Lubrication
32-05 Suspension Inspection
32-06 Suspension U-Bolt Torque Check
32-07 V-Ride Rear Suspension Inspection
33-01 Knuckle Pin Lubricating*
33-02 Tie-Rod End Lubricating and Inspecting*
33-03 All-Axle Alignment Checking	.																			
33-04 Wheel End Inspection
33-05 Oil-Filled Hubs Oil Level Checking
33-06 Oil-Filled Hubs Oil Changing	
35-01 Axle Lubricant Level Checking
35-02 Axle Lubricant Changing and Magnetic Plug Cleaning	For Detroit rear axles with petroleum-based oil, change the lubricant every 100,000 miles (160 900 km) or every 12 months, whichever comes first; if synthetic oil is used, change the lubricant every 250,000 miles (402 250 km) or every 36 months, whichever comes first. For Meritor rear axles with petroleum-based oil, change the lubricant at 100,000 miles (160 900 km) or at 12 months of service, whichever comes first, and every 24 months thereafter; if synthetic oil is used, change the lubricant every 250,000 miles (402 250 km) or every 36 months, whichever comes first.																			
35-03 Axle Breather Checking
35-04 Oil-Filled Hubs Oil Level Checking, Tag Axle
35-05 Oil-Filled Hubs Oil Changing, Tag Axle	
40-01 Wheel Nut Checking	
40-02 Wheel Cleaning and Polishing	Perform these steps each time the wheels and/or the vehicle is washed.																			
41-01 Driveline Inspection and Lubrication
42-01 Brake System Valves Inspecting

Vehicle Maintenance Schedule Table: 00-02

Maintenance Operation Procedures and Schedule																				
Maintenance Operation Number and Description	Maintenance Interval in Miles x 1000																			
	6	15	30	45	60	75	90	105	120	135	150	165	180	195	210	225	240	255	270	285
	Maintenance Interval in Kilometers x 1000																			
	9	24	48	72	96	120	145	169	193	217	241	265	290	314	338	362	386	410	434	458
	Maintenance Interval in Months																			
6	12	24	36	48	60	72	84	96	108	120	132	144	156	168	180	192	204	216	228	
42-02 Air Dryer Checking	•	•	•	•	•	•	•	•	•	•	•	•	•	•	•	•	•	•	•	•
42-03 Air Dryer Desiccant and Coalescent Filter Replacing				•			•		•			•			•			•		
42-04 Camshaft Bracket Bushing Lubricating		•	•	•	•	•	•	•	•	•	•	•	•	•	•	•	•	•	•	•
42-05 Slack Adjuster Lubricating	•	•	•	•	•	•	•	•	•	•	•	•	•	•	•	•	•	•	•	•
42-06 Foot Brake Valve Actuator Lubricating	•	•	•	•	•	•	•	•	•	•	•	•	•	•	•	•	•	•	•	•
42-07 Bendix Hydro-Max® Brake System Inspecting (front-engine diesel chassis)	•	•	•	•	•	•	•	•	•	•	•	•	•	•	•	•	•	•	•	•
42-08 Brake Caliper Slide Pin Lubricating, Bosch Brakes (front-engine diesel chassis)	Lubricate every 6 months OR every 18,000 miles (28 962 km), whichever comes first.																			
42-09 Brake Lines Checking, Hydraulic Disc or Air Brakes	•	•	•	•	•	•	•	•	•	•	•	•	•	•	•	•	•	•	•	•
42-10 Brake Lining Wear Checking, Hydraulic Disc Brakes (front-engine diesel chassis)	•	•	•	•	•	•	•	•	•	•	•	•	•	•	•	•	•	•	•	•
42-11 Brake Inspecting	•	•	•	•	•	•	•	•	•	•	•	•	•	•	•	•	•	•	•	•
42-12 Meritor Roller Pin Lubricating		•	•	•	•	•	•	•	•	•	•	•	•	•	•	•	•	•	•	•
46-01 Drag Link Lubricating	•	•	•	•	•	•	•	•	•	•	•	•	•	•	•	•	•	•	•	•
46-02 Power Steering Reservoir Fluid Level Checking	•	•	•	•	•	•	•	•	•	•	•	•	•	•	•	•	•	•	•	•
46-03 Power Steering Fluid and Filter Changing		•	•	•	•	•	•	•	•	•	•	•	•	•	•	•	•	•	•	•
46-04 Steering Driveline Lubricating	•	•	•	•	•	•	•	•	•	•	•	•	•	•	•	•	•	•	•	•
46-05 Steering Gear Lubricating	•	•	•	•	•	•	•	•	•	•	•	•	•	•	•	•	•	•	•	•
46-06 Hydraulic Reservoir Filter Changing (metal reservoir only)	•		•		•		•		•		•		•		•		•		•	
47-01 Fuel Tank Mounts and Fuel Line Checking	•		•		•		•		•		•		•		•		•		•	
47-02 Fuel/Water Separator Element Replacing	See the applicable engine operation and maintenance manual for fuel/water separator element replacing intervals.																			

Vehicle Maintenance Schedule Table: 00-02

Maintenance Operation Procedures and Schedule																					
Maintenance Operation Number and Description	Maintenance Interval in Miles x 1000																				
	6	15	30	45	60	75	90	105	120	135	150	165	180	195	210	225	240	255	270	285	
	Maintenance Interval in Kilometers x 1000																				
	9	24	48	72	96	120	145	169	193	217	241	265	290	314	338	362	386	410	434	458	
	Maintenance Interval in Months																				
6	12	24	36	48	60	72	84	96	108	120	132	144	156	168	180	192	204	216	228		
49-01 Exhaust System Inspecting (Noise Emission Control)	
54-01 Ground Cables Checking and Cleaning	
54-02 Battery Voltage Checking	
83-01 Air Conditioner Inspecting	

* For vehicles with Detroit axles, complete this procedure once a year or every 25,000 miles (40 000 km), whichever comes first.

Table 1, Maintenance Operation Procedures and Schedule

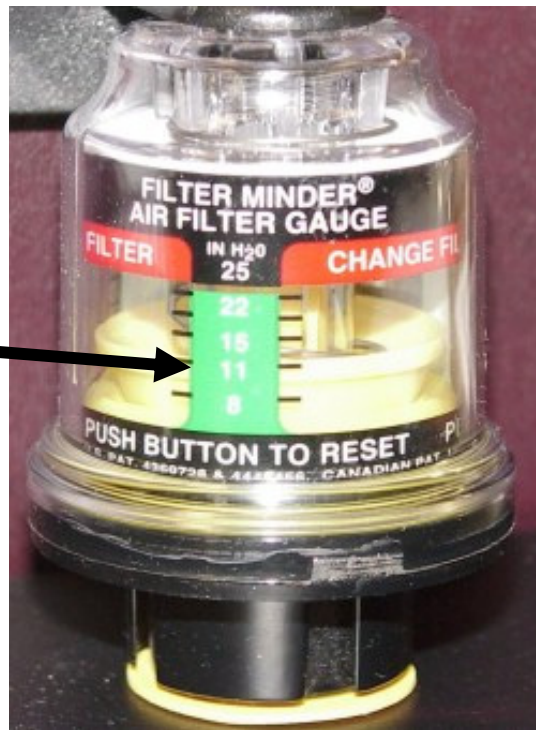


AIR FILTER MINDER



Brand New Air Cleaner

10" to 12" of Vacuum



- Engine Air Cleaner Element should be changed when the air inlet restriction indicator reaches 25 inches of vacuum or every two years whichever occurs first.

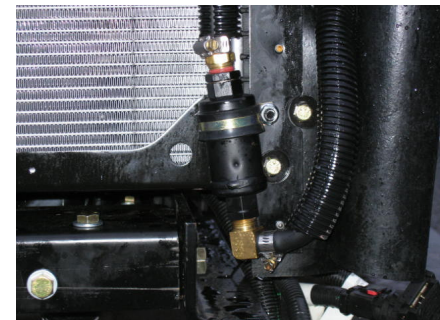
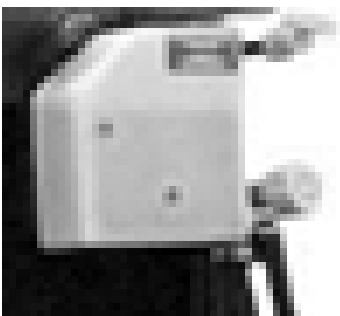


Power Steering Reservoir's

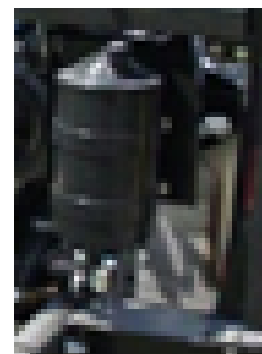
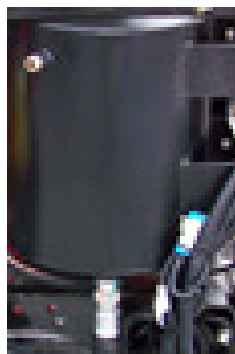
New P/S Reservoir with built in Filter



Older P/S Reservoir without filter and first attempt at filters



12 Qt Metal Reservoirs with Filters in the bottom



6000 Mile or 6 Month Initial Maintenance: 00–03

Procedure Performed (check off or initial)	6000 Mile (9654 km) or 6 Month Initial Maintenance*	MOP
Inspect _____	Engine Drive Belt Inspecting	01–01
Check _____	Engine-Support Fasteners Checking	01–02
Change _____	Engine Oil and Filter (see the engine manufacturer's manual)	—
Inspect _____	Charge Air Cooler (CAC) Inspection and Cleaning (if cleaning is needed)	09–02
Check _____	Alternator, Battery, and Starter Connections Check	15–01
Inspect/ Check _____	Radiator (radiator cap, coolant freeze points, SCA levels, hose routing for chaffing and leaks)	20–01, 20–02, 20–03
Change _____	Mechanical Fan Drive Gearbox Oil Change	20–04
Change _____	Transmission Fluid and Filter (if required by Allison)	26–03
Inspect _____	Transmission Hose Routing for Chaffing and Leaks	—
Lubricate _____	Throttle Pedal Pivot Pin Lubricating	30–01
Check _____	Suspension Fastener Torque Check	32–01
Check _____	Suspension Height Control Valve Check	32–02
Lubricate _____	ZF IFS Lubrication	32–04
Check _____	Suspension U-Bolt Torque Check	32–06
Inspection _____	V-Ride Rear Suspension Inspection	32–07
Lubricate _____	Knuckle Pin Lubricating†	33–01
Lubricate _____	Tie-Rod End Lubricating and Inspecting†	33–02
Check _____	All-Axle Alignment Checking	33–03
Inspect _____	Wheel End Inspecting	33–04
Check/ Change _____	Oil-Filled Hubs Oil Changing (front and tag axle)	33–05, 33–06, 35–04, 35–05
Check _____	Axle Seals for Leaks	—
Change _____	Axle Lubricant Changing and Magnetic Plug Cleaning (Detroit and Meritor axles)	35–02
Check _____	Axle Breather Checking	35–03
Check _____	Wheel Nut Checking	40–01
Check _____	Tire Pressure	—
Lubricate _____	Driveline Inspection and Lubrication	41–01
Inspect _____	Brake System Valves Inspecting	42–01
Inspect _____	Air Dryer and Air Lines for Proper Routing, Chaffing, and Leaks	42–02
Lubricate _____	Camshaft Bracket Bushing Lubricating	42–04

6000 Mile or 6 Month Initial Maintenance: 00-03

Procedure Performed (check off or initial)	6000 Mile (9654 km) or 6 Month Initial Maintenance*	MOP
Lubricate _____	Slack Adjuster Lubricating	42-05
Lubricate _____	Foot Brake Valve Actuator Lubricating	42-06
Inspect _____	Bendix Hydro-Max® Brake System Inspecting (front-engine only)	42-07
Lubricate _____	Brake Caliper Slide Pin Lubricating, Bosch Brakes (front-engine diesel chassis)	42-08
Check _____	Brake Lines Checking, Hydraulic Disc or Air Brakes	42-09
Check _____	Brake Lining Wear Checking, Hydraulic Disc Brakes (front-engine only)	42-10
Inspect _____	Brake Inspecting (air brakes)	42-11
Drain _____	Air Tanks	—
Lubricate _____	Drag Link Lubricating	46-01
Lubricate _____	Steering Driveline Lubricating	46-04
Lubricate _____	Steering Gear Lubricating	46-05
Change _____	Hydraulic Reservoir Filter Changing (including TRW)	46-06
Inspect _____	Fuel Tank Mounts and Fuel Line Checking	47-01
Change _____	Fuel Filters	—
Inspect _____	Exhaust System Inspecting	49-01
Check _____	Ground Cables Checking and Cleaning	54-01
Inspect _____	Air Conditioner Component Inspection	83-01
Customer‡ _____ Date _____		

* Additional copies are available on the Freightliner Custom Chassis Corporation website (www.freightlinerchassis.com).

† For vehicles with Detroit axles, complete this procedure once a year or every 25,000 miles (40 000 km), whichever comes first.

‡ Your signature on this form indicates that you have reviewed and agree to the service items to be performed. Any items you wish to exclude should be indicated with a "no" to the left of that service item.

15,000 Mile or 12 Month Maintenance: 00–04

Procedure Performed (check off or initial)	15,000 Mile (24 135 km) or 12 Month Maintenance*	MOP
Inspect _____	Engine Drive Belt Inspecting	01–01
Check _____	Engine-Support Fasteners Checking	01–02
Change _____	Engine Oil and Filter (see the engine manufacturer's manual)	—
Inspect _____	Air Cleaner Inspection	09–01
Inspect _____	Charge Air Cooler (CAC) Inspection and Cleaning (if cleaning is needed)	09–02
Inspect _____	Air Compressor Inspection	13–01
Check _____	Alternator, Battery, and Starter Connections Check	15–01
Inspect/ Check _____	Radiator (radiator cap, coolant freeze points, SCA levels, hose routing for chaffing and leaks)	20–01, 20–02, 20–03
Lubricate _____	Mechanical Fan Drive Gearbox Lubrication	20–05
Change _____	Transmission Fluid and Filter (if required by Allison)	26–03
Inspect _____	Transmission Hose Routing for Chaffing and Leaks	—
Lubricate _____	Throttle Pedal Pivot Pin Lubricating	30–01
Check _____	Suspension Fastener Torque Check	32–01
Check _____	Suspension Height Control Valve Check	32–02
Lubricate _____	ZF IFS Lubrication	32–04
Check _____	Suspension U-Bolt Torque Check	32–06
Inspection _____	V-Ride Rear Suspension Inspection	32–07
Lubricate _____	Knuckle Pin Lubricating†	33–01
Lubricate _____	Tie-Rod End Lubricating and Inspecting†	33–02
Inspect _____	Wheel End Inspecting	33–04
Check/ Change _____	Oil-Filled Hubs Oil Changing (front and tag axle)	33–05, 33–06, 35–04, 35–05
Check _____	Axle Seals for Leaks	—
Change _____	Axle Lubricant Changing and Magnetic Plug Cleaning (Detroit and Meritor axles)	35–02
Check _____	Axle Breather Checking	35–03
Check _____	Tire Pressure	—
Lubricate _____	Driveline Inspection and Lubrication	41–01
Inspect _____	Brake System Valves Inspecting	42–01
Inspect _____	Air Dryer and Air Lines for Proper Routing, Chaffing, and Leaks	42–02
Lubricate _____	Camshaft Bracket Bushing Lubricating	42–04

15,000 Mile or 12 Month Maintenance: 00-04

Procedure Performed (check off or initial)	15,000 Mile (24 135 km) or 12 Month Maintenance*	MOP
Lubricate _____	Slack Adjuster Lubricating	42-05
Lubricate _____	Foot Brake Valve Actuator Lubricating	42-06
Inspect _____	Bendix Hydro-Max® Brake System Inspecting (front-engine only)	42-07
Lubricate _____	Brake Caliper Slide Pin Lubricating, Bosch Brakes (front-engine diesel chassis)	42-08
Check _____	Brake Lines Checking, Hydraulic Disc or Air Brakes	42-09
Check _____	Brake Lining Wear Checking, Hydraulic Disc Brakes (front-engine only)	42-10
Inspect _____	Brake Inspecting (air brakes)	42-11
Lubricate _____	Meritor Roller Pin Lubricating	42-12
Drain _____	Air Tanks	—
Lubricate _____	Drag Link Lubricating	46-01
Change _____	Power Steering Fluid and Filter Changing	46-03
Lubricate _____	Steering Driveline Lubricating	46-04
Lubricate _____	Steering Gear Lubricating	46-05
Change _____	Hydraulic Reservoir Filter Changing (including TRW)	46-06
Inspect _____	Fuel Tank Mounts and Fuel Line Checking	47-01
Change _____	Fuel Filters	—
Inspect _____	Exhaust System Inspecting	49-01
Check _____	Ground Cables Checking and Cleaning	54-01
Inspect _____	Air Conditioner Component Inspection	83-01
Customer‡ _____ Date _____		

* Additional copies are available on the Freightliner Custom Chassis Corporation website (www.freightlinerchassis.com).

† For vehicles with Detroit axles, complete this procedure once a year or every 25,000 miles (40 000 km), whichever comes first.

‡ Your signature on this form indicates that you have reviewed and agree to the service items to be performed. Any items you wish to exclude should be indicated with a "no" to the left of that service item.

30,000 Mile or 24 Month Maintenance: 00–05

Procedure Performed (check off or initial)	30,000 Mile (48 270 km) or 24 Month Maintenance*	MOP
Inspect _____	Engine Drive Belt Inspecting	01–01
Check _____	Engine-Support Fasteners Checking	01–02
Change _____	Engine Oil and Filter (see the engine manufacturer's manual)	—
Change _____	Air Cleaner Replacement	09–01
Inspect _____	Charge Air Cooler (CAC) Inspection and Cleaning (if cleaning is needed)	09–02
Inspect _____	Air Compressor Inspection	13–01
Check _____	Alternator, Battery, and Starter Connections Check	15–01
Inspect/ Check _____	Radiator (radiator cap, coolant freeze points, SCA levels, hose routing for chaffing and leaks)	20–01, 20–02, 20–03
Change _____	Mechanical Fan Drive Gearbox Oil Change	20–04
Lubricate _____	Mechanical Fan Drive Gearbox Lubrication	20–05
Change _____	Transmission Fluid and Filter (if required by Allison)	26–03
Inspect _____	Transmission Hose Routing for Chaffing and Leaks	—
Lubricate _____	Throttle Pedal Pivot Pin Lubricating	30–01
Check _____	Suspension Fastener Torque Check	32–01
Check _____	Suspension Height Control Valve Check	32–02
Lubricate _____	ZF IFS Lubrication	32–04
Check _____	Suspension U-Bolt Torque Check	32–06
Inspection _____	V-Ride Rear Suspension Inspection	32–07
Lubricate _____	Knuckle Pin Lubricating†	33–01
Lubricate _____	Tie-Rod End Lubricating and Inspecting†	33–02
Inspect _____	Wheel End Inspecting	33–04
Check/ Change _____	Oil-Filled Hubs Oil Changing (front and tag axle)	33–05, 33–06, 35–04, 35–05
Check _____	Axle Seals for Leaks	—
Change _____	Axle Lubricant Changing and Magnetic Plug Cleaning (Detroit and Meritor axles)	35–02
Check _____	Axle Breather Checking	35–03
Check _____	Wheel Nut Checking	40–01
Check _____	Tire Pressure	—
Lubricate _____	Driveline Inspection and Lubrication	41–01
Inspect _____	Brake System Valves Inspecting	42–01

30,000 Mile or 24 Month Maintenance: 00-05

Procedure Performed (check off or initial)	30,000 Mile (48 270 km) or 24 Month Maintenance*	MOP
Inspect _____	Air Dryer and Air Lines for Proper Routing, Chaffing, and Leaks	42-02
Lubricate _____	Camshaft Bracket Bushing Lubricating	42-04
Lubricate _____	Slack Adjuster Lubricating	42-05
Lubricate _____	Foot Brake Valve Actuator Lubricating	42-06
Inspect _____	Bendix Hydro-Max® Brake System Inspecting (front-engine only)	42-07
Lubricate _____	Brake Caliper Slide Pin Lubricating, Bosch Brakes (front-engine diesel chassis)	42-08
Check _____	Brake Lines Checking, Hydraulic Disc or Air Brakes	42-09
Check _____	Brake Lining Wear Checking, Hydraulic Disc Brakes (front-engine only)	42-10
Inspect _____	Brake Inspecting (air brakes)	42-11
Lubricate _____	Meritor Roller Pin Lubricating	42-12
Drain _____	Air Tanks	—
Lubricate _____	Drag Link Lubricating	46-01
Change _____	Power Steering Fluid and Filter Changing	46-03
Lubricate _____	Steering Driveline Lubricating	46-04
Lubricate _____	Steering Gear Lubricating	46-05
Change _____	Hydraulic Reservoir Filter Changing (including TRW)	46-06
Inspect _____	Fuel Tank Mounts and Fuel Line Checking	47-01
Change _____	Fuel Filters	—
Inspect _____	Exhaust System Inspecting	49-01
Check _____	Ground Cables Checking and Cleaning	54-01
Inspect _____	Air Conditioner Component Inspection	83-01
Customer‡ _____ Date _____		

* Additional copies are available on the Freightliner Custom Chassis Corporation website (www.freightlinerchassis.com).

† For vehicles with Detroit axles, complete this procedure once a year or every 25,000 miles (40 000 km), whichever comes first.

‡ Your signature on this form indicates that you have reviewed and agree to the service items to be performed. Any items you wish to exclude should be indicated with a "no" to the left of that service item.

45,000 Mile or 36 Month Maintenance: 00–06

Procedure Performed (check off or initial)	45,000 Mile (72 405 km) or 36 Month Maintenance*	MOP
Inspect _____	Engine Drive Belt Inspecting	01–01
Check _____	Engine-Support Fasteners Checking	01–02
Change _____	Engine Oil and Filter (see the engine manufacturer's manual)	—
Inspect _____	Air Cleaner Inspection	09–01
Inspect _____	Charge Air Cooler (CAC) Inspection and Cleaning (if cleaning is needed)	09–02
Inspect _____	Air Compressor Inspection	13–01
Check _____	Alternator, Battery, and Starter Connections Check	15–01
Inspect/ Check _____	Radiator (radiator cap, coolant freeze points, SCA levels, hose routing for chaffing and leaks)	20–01, 20–02, 20–03
Lubricate _____	Mechanical Fan Drive Gearbox Lubrication	20–05
Change _____	Transmission Fluid and Filter (if required by Allison)	26–03
Inspect _____	Transmission Hose Routing for Chaffing and Leaks	—
Lubricate _____	Throttle Pedal Pivot Pin Lubricating	30–01
Check _____	Suspension Fastener Torque Check	32–01
Check _____	Suspension Height Control Valve Check	32–02
Lubricate _____	ZF IFS Lubrication	32–04
Check _____	Suspension U-Bolt Torque Check	32–06
Inspection _____	V-Ride Rear Suspension Inspection	32–07
Lubricate _____	Knuckle Pin Lubricating†	33–01
Lubricate _____	Tie-Rod End Lubricating and Inspecting†	33–02
Inspect _____	Wheel End Inspecting	33–04
Check/ Change _____	Oil-Filled Hubs Oil Changing (front and tag axle)	33–05, 33–06, 35–04, 35–05
Check _____	Axle Seals for Leaks	—
Change _____	Axle Lubricant Changing and Magnetic Plug Cleaning (Detroit and Meritor axles)	35–02
Check _____	Axle Breather Checking	35–03
Check _____	Tire Pressure	—
Lubricate _____	Driveline Inspection and Lubrication	41–01
Inspect _____	Brake System Valves Inspecting	42–01
Inspect _____	Air Dryer and Air Lines for Proper Routing, Chaffing, and Leaks	42–02
Change _____	Air Dryer Desiccant and Coalescent Filter Replacing	43–03

45,000 Mile or 36 Month Maintenance: 00-06

Procedure Performed (check off or initial)	45,000 Mile (72 405 km) or 36 Month Maintenance*	MOP
Lubricate _____	Camshaft Bracket Bushing Lubricating	42-04
Lubricate _____	Slack Adjuster Lubricating	42-05
Lubricate _____	Foot Brake Valve Actuator Lubricating	42-06
Inspect _____	Bendix Hydro-Max® Brake System Inspecting (front-engine only)	42-07
Lubricate _____	Brake Caliper Slide Pin Lubricating, Bosch Brakes (front-engine diesel chassis)	42-08
Check _____	Brake Lines Checking, Hydraulic Disc or Air Brakes	42-09
Check _____	Brake Lining Wear Checking, Hydraulic Disc Brakes (front-engine only)	42-10
Inspect _____	Brake Inspecting (air brakes)	42-11
Lubricate _____	Meritor Roller Pin Lubricating	42-12
Drain _____	Air Tanks	—
Lubricate _____	Drag Link Lubricating	46-01
Change _____	Power Steering Fluid and Filter Changing	46-03
Lubricate _____	Steering Driveline Lubricating	46-04
Lubricate _____	Steering Gear Lubricating	46-05
Change _____	Hydraulic Reservoir Filter Changing (including TRW)	46-06
Inspect _____	Fuel Tank Mounts and Fuel Line Checking	47-01
Change _____	Fuel Filters	—
Inspect _____	Exhaust System Inspecting	49-01
Check _____	Ground Cables Checking and Cleaning	54-01
Inspect _____	Air Conditioner Component Inspection	83-01
Customer‡ _____ Date _____		

* Additional copies are available on the Freightliner Custom Chassis Corporation website (www.freightlinerchassis.com).

† For vehicles with Detroit axles, complete this procedure once a year or every 25,000 miles (40 000 km), whichever comes first.

‡ Your signature on this form indicates that you have reviewed and agree to the service items to be performed. Any items you wish to exclude should be indicated with a "no" to the left of that service item.

60,000 Mile or 48 Month Maintenance: 00–07

Procedure Performed (check off or initial)	60,000 Mile (96 540 km) or 48 Month Maintenance*	MOP
Inspect _____	Engine Drive Belt Inspecting	01–01
Check _____	Engine-Support Fasteners Checking	01–02
Change _____	Engine Oil and Filter (see the engine manufacturer's manual)	—
Change _____	Air Cleaner Replacement	09–01
Inspect _____	Charge Air Cooler (CAC) Inspection and Cleaning (if cleaning is needed)	09–02
Inspect _____	Air Compressor Inspection	13–01
Check _____	Alternator, Battery, and Starter Connections Check	15–01
Inspect/ Check _____	Radiator (radiator cap, coolant freeze points, SCA levels, hose routing for chaffing and leaks)	20–01, 20–02, 20–03
Change _____	Mechanical Fan Drive Gearbox Oil Change	20–04
Lubricate _____	Mechanical Fan Drive Gearbox Lubrication	20–05
Change _____	Transmission Fluid and Filter (if required by Allison)	26–03
Inspect _____	Transmission Hose Routing for Chaffing and Leaks	—
Lubricate _____	Throttle Pedal Pivot Pin Lubricating	30–01
Check _____	Suspension Fastener Torque Check	32–01
Check _____	Suspension Height Control Valve Check	32–02
Lubricate _____	ZF IFS Lubrication	32–04
Check _____	Suspension U-Bolt Torque Check	32–06
Inspection _____	V-Ride Rear Suspension Inspection	32–07
Lubricate _____	Knuckle Pin Lubricating†	33–01
Lubricate _____	Tie-Rod End Lubricating and Inspecting†	33–02
Inspect _____	Wheel End Inspecting	33–04
Check/ Change _____	Oil-Filled Hubs Oil Changing (front and tag axle)	33–05, 33–06, 35–04, 35–05
Check _____	Axle Seals for Leaks	—
Change _____	Axle Lubricant Changing and Magnetic Plug Cleaning (Detroit and Meritor axles)	35–02
Check _____	Axle Breather Checking	35–03
Check _____	Wheel Nut Checking	40–01
Check _____	Tire Pressure	—
Lubricate _____	Driveline Inspection and Lubrication	41–01
Inspect _____	Brake System Valves Inspecting	42–01

60,000 Mile or 48 Month Maintenance: 00-07

Procedure Performed (check off or initial)	60,000 Mile (96 540 km) or 48 Month Maintenance*	MOP
Inspect _____	Air Dryer and Air Lines for Proper Routing, Chaffing, and Leaks	42-02
Lubricate _____	Camshaft Bracket Bushing Lubricating	42-04
Lubricate _____	Slack Adjuster Lubricating	42-05
Lubricate _____	Foot Brake Valve Actuator Lubricating	42-06
Inspect _____	Bendix Hydro-Max® Brake System Inspecting (front-engine only)	42-07
Lubricate _____	Brake Caliper Slide Pin Lubricating, Bosch Brakes (front-engine diesel chassis)	42-08
Check _____	Brake Lines Checking, Hydraulic Disc or Air Brakes	42-09
Check _____	Brake Lining Wear Checking, Hydraulic Disc Brakes (front-engine only)	42-10
Inspect _____	Brake Inspecting (air brakes)	42-11
Lubricate _____	Meritor Roller Pin Lubricating	42-12
Drain _____	Air Tanks	—
Lubricate _____	Drag Link Lubricating	46-01
Change _____	Power Steering Fluid and Filter Changing	46-03
Lubricate _____	Steering Driveline Lubricating	46-04
Lubricate _____	Steering Gear Lubricating	46-05
Change _____	Hydraulic Reservoir Filter Changing (including TRW)	46-06
Inspect _____	Fuel Tank Mounts and Fuel Line Checking	47-01
Change _____	Fuel Filters	—
Inspect _____	Exhaust System Inspecting	49-01
Check _____	Ground Cables Checking and Cleaning	54-01
Inspect _____	Air Conditioner Component Inspection	83-01
Customer‡ _____ Date _____		

* Additional copies are available on the Freightliner Custom Chassis Corporation website (www.freightlinerchassis.com).

† For vehicles with Detroit axles, complete this procedure once a year or every 25,000 miles (40 000 km), whichever comes first.

‡ Your signature on this form indicates that you have reviewed and agree to the service items to be performed. Any items you wish to exclude should be indicated with a "no" to the left of that service item.